

California Driving (Rules of the road)

When driving in California *DON'T ASSUME ANYTHING!!* California driving is not the same as in other areas of the USA or Europe. If you drive aggressively here, you *WILL* have an accident.

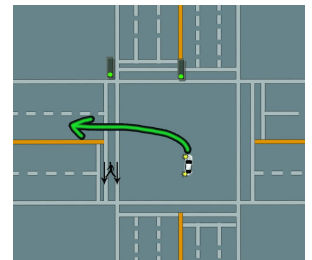
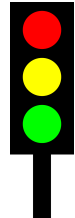
The key is to *DRIVE DEFENSIVELY!*

- Keep your distance
- Watch the road at all times

Superman himself couldn't react fast enough if he followed too closely, or looked away for one second at the wrong time.

At an intersection (where most accidents occur):

- **When the traffic lights CHANGE FROM RED to GREEN**, please do not take off immediately. **LOOK** and **WAIT** to make sure no one is running the red light. When you are certain that all oncoming traffic has stopped and that the intersection is clear of pedestrians, you may proceed. California drivers have a tendency to run red lights!
- When making **LEFT-HAND TURNS**, pull into the middle of the intersection. **WAIT FOR ALL** oncoming traffic to pass. (See advice above.) Make sure you do not cross over into other lanes. California drivers love to rush through intersections on a yellow light. Enter the intersection, to make a left-hand turn, only when you are 130% sure it is safe to proceed. Trust no one!



IMPORTANT: most accidents occur because both the car turning left and the car coming through the intersection think that they have the right-of-way. It's almost impossible to prove, either way, however, the driver making the left hand turn will usually be considered to be at fault. Please use extreme caution.



ALL PEOPLE IN A MOVING VEHICLE MUST WEAR A SEATBELT AT ALL TIMES!!
(If you're driving in Las Vegas, NV you need to drive defensively too.)